

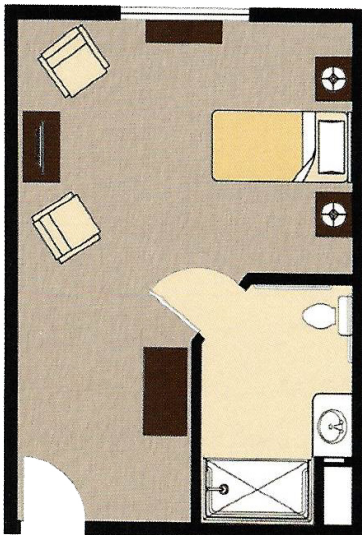


# Cascade Valley

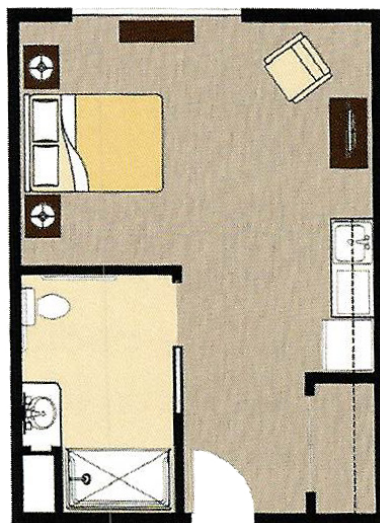
ASSISTED LIVING AND MEMORY CARE



Cascade Valley Memory Care offers studios.  
Shown below are floor plans of each.



**STUDIO**  
297-353 sq ft



**LARGE STUDIO**  
380 sq ft



**SHARED SUITE**  
445 sq ft

# MEMORY CARE MONTHLY RATES

Cascade Valley Memory Care offers a full range of services included in the monthly base rate. Apartments are rented month-to-month.  
No buy-in or lease fees are required.

## MEMORY CARE BASE RENT

*Does not include care price*

Studio.....	\$5,950
Large Studio.....	\$6,500
Shared Suite.....	\$5,145
Respite* .....	\$350
Reservation Fee (applied to move-in fee).....	\$2,500

*\*Prices are subject to change*



Personal Assistance services are available in addition to the services included in the base rent. Each resident will be assessed prior to move-in and regularly thereafter, to determine which level of personal assistance is needed. Additional charges based on the Personal Care services provided.

## PERSONAL CARE MONTHLY FEE

Level 1 .....	\$500
Level 2 .....	\$850
Level 3 .....	\$1,200
Level 4 .....	\$1,600
Level 5 .....	\$2,000

*Ancillary fees may be applicable*

*\*Pets are NOT allowed in Memory Care.*

*\*Respite is all inclusive of rent and care points daily rate with a minimum of 14 days and maximum of 30 days- Respite does not include ancillary services this is billed separately.*